

ZHCOOLER

ГидроСТАНОК
ПРОЕКТНО-ПРОИЗВОДСТВЕННОЕ ПРЕДПРИЯТИЕ



Heat Transfer Solution

ZHCOOLER established in 1998, is a professional manufacturer of radiators cold plate heat exchanger and bar plate fin heat exchanger company.

ZHCOOLER Group has three sub-brands, Zhenhua Heat Exchanger and Zhenhua Radiator, Thermictransfer.

Zhenhua Heat Exchanger focus on bar plate fin type, Zhenhua Radiator focus on tube&flat fin type, Thermictransfer focus on cold plate.

In 20 years of continuous design and development, the rich experience can satisfy your need for different heat exchanger.

The standard mature series heat exchanger is suitable for the engine system, electronic power equipment, hydraulic system, generator set, concrete mixer, engineering machinery, industry, mining, agriculture, power generation equipment, chemicals, automobiles, special vehicles, high-power chips, high-power electronic devices, power equipment, integrated circuits, medical equipment, aerospace vehicles, server data centers, railway locomotives, high-speed railways, new energy equipment, solar equipment, wind power equipment, electric vehicles, signal base stations etc.

Now we export more than 30 countries including the United States, Germany, Japan, Korea, Canada, Australia, Finland, United Kingdom, New Zealand, Netherlands, Russia, Malaysia, Turkey and Iran etc.

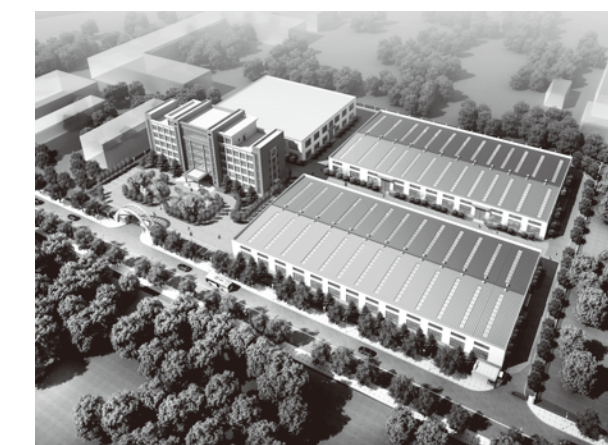
ZHCOOLER is certified according to ISO 9001 (Quality Management), CE. The additional certifications according to ISO 14001 emphasise the important corporate goals of ecological friendliness and the conservation of resources.



About design and development

We have more than 20 technical engineers, according to the basic parameters provided by customers, combined with our rich product design experience, calculate the heat transfer performance requirements of the heat exchanger through software, and then through the simulation software, virtual test heat transfer Performance.

If the customer requires a real performance test of the heat exchanger, we can conduct real experiments through our experimental equipment platform to obtain accurate heat transfer performance parameters.





CUSTOMIZED R & D AND GLOBAL SERVICES

Excellent customize heat transfer solution

ZHCOOLER has more than 20 professional engineers, the different structure of the heat exchanger by default application environment and conditions, using Pro/e, UG, CATIA 3d design, to maximize the FLUENT software to simulate such as assembly and testing to ensure product is suitable for your equipment and products.

20⁺ Engineers

Mature and stable standardized heat transfer solution

After 18 years of product research and development, the standardization of our mature heat transfer solution can let you need not to wait, heat transfer solution used construction machinery industry, mining, mining, agriculture, power plant, chemical industry, automobile, special vehicles, such as any heat transfer areas.

18⁺ Years

Professional globalization export service system

Our mature experience to ensure that after you purchase, make sure timely, efficient, high quality after shipping, air, express delivery, land transportation to reach your company or the designated place.

Professional globalization after sales service

After the product is sold, we are very interested in your feedback on product quality, performance feedback, and service feedback. We will be the first to make a post-sale solution to your proposal, which will give you a satisfactory reply in the shortest time.

Product Series 01

Aluminum Bar Plate Fin Heat Exchanger Element

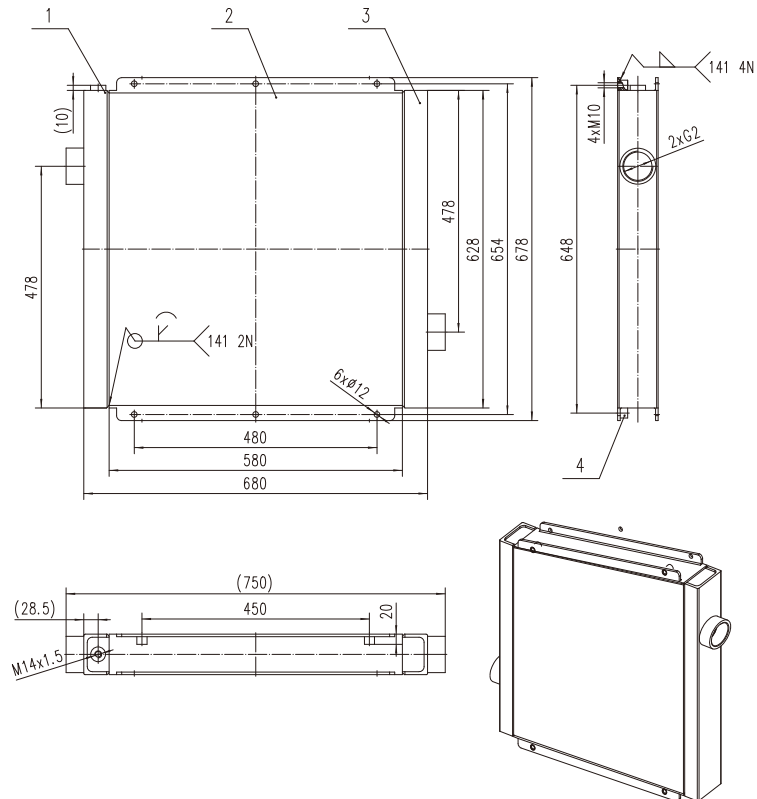
HRQ -SERIES

ZHCOOLER Customized aluminum bar plate fin heat exchanger is the most amazing is that you have met.

Aluminum fin type structure, has a compact structure, high heat efficiency, shock resistance, etc.

ZHCOOLER can design and manufacture cross-flow
countercurrent structure for you

- Optional various cold side fin type
- Optional various of hot side fin type
- Optional various of specifications seal material
- Optional different thickness layered aluminium plate
- Optional different welding methods
- Optional different end tank material (aluminum, casting)

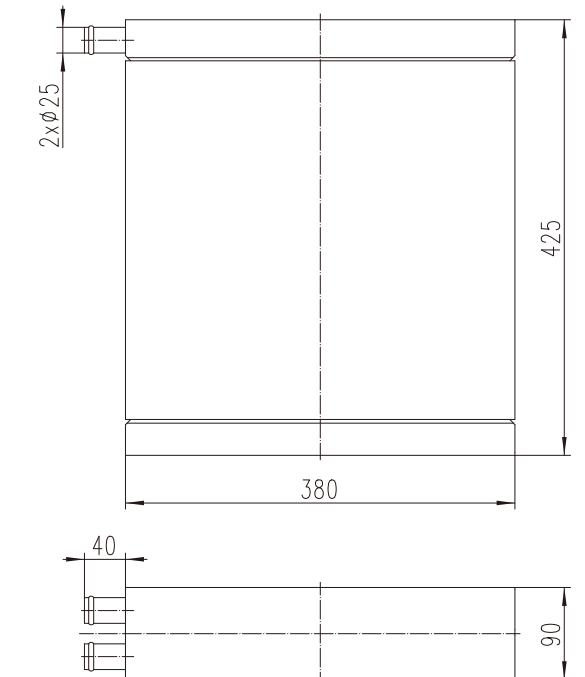
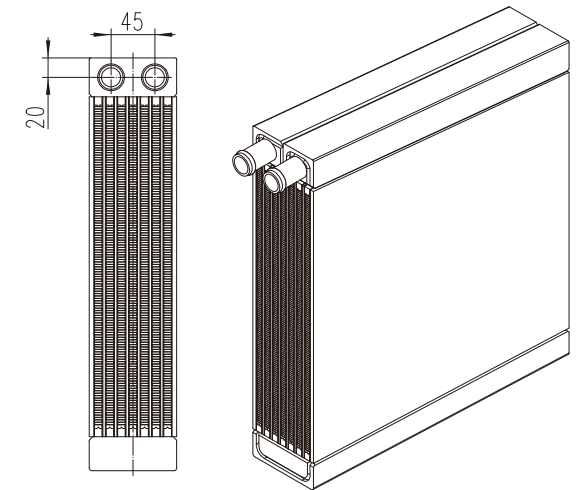
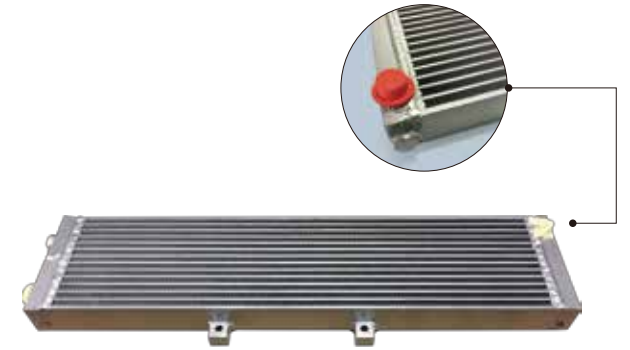


Technical Specifications :

- Operating pressure: 320-560 PSI
- Test pressure: 600-1000PSI
- Max operating temperature: 248 °F
- Optional Customize other technical requirement

Compatible Fluids:

- Mineral Oil
- Water - Oil Emulsion
- Water – Glycol
- Other Fluids



Product Series 02

ZHCOOLER

Combined Bar Plate Heat Exchanger

FHS-SERIES

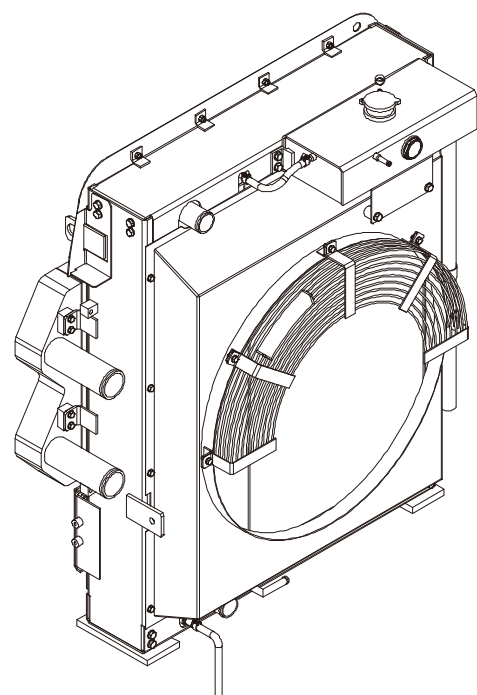
Combined bar plate heat exchanger is ZHCOOLER focus for many years of continuous design research and development of important projects

ZHCOOLER can be in accordance with the requirements of any parameters, customized best suited to your heat transfer solution

Such as heat source, heat transfer, temperature, heat transfer medium temperature, space size, inlet and outlet temperature, parameters of any engine

Any heat source need to change the place we can solve it

According to a little parameter, ZHCOOLER can simulation design high quality products that you need, we can provide free 3D and graphic drawings, convenient you confirm all the details



- Optional different fin type
- Optional different aluminium thickness and models
- Customize different sizes of core body
- Optional different type tank
- (Casting and manual welding)
- Optional in different wind cover type (Seal plate or circular steel wire coil)
- Optional different drive mode (AC/DC/ Hydraulic motor/Pneumatic fan)
- Optional different types of blades (The nylon material, iron material, aluminum material)
- Optional to increase the heat transfer medium filtering system
- Optional different temperature sensors and electrical switch (Water temperature sensor, oil temperature sensor) (Cable and wireless control switch)
- Can combination of water and oil heat exchanger, gas water heat exchanger, gas oil heat exchanger and other customized different medium heat exchanger in combination
- The composite heat exchanger can choose different framework according to the working environment (Steel frame, aluminum frame)
- Product pressure test is optional from 200-1200PSI

Special Advantage:

- Composite heat exchanger assembly by a variety of monomers,
- One-piece attain the goal of a variety of heat transfer medium
- The structure is compact, modular design, save a space
- Work alone, separate maintenance convenient maintenance
- Optional steel and aluminum frame according to the environment
- Optional AC/DC fan motor, hydraulic motor, pneumatic fan
- Optional combination gas oil, gas water combination, combination of water and oil
- More than 6 kinds cooler of combinations

Application:

Drill Rigs Equipment

Gas & Oil Field Equipment

Generator Sets

Road Construction

Forestry Machine

Mining Machine

Road Sweepers

Cranes and Lifting Equipment

Typically Off-Highway applications



Product Series 03

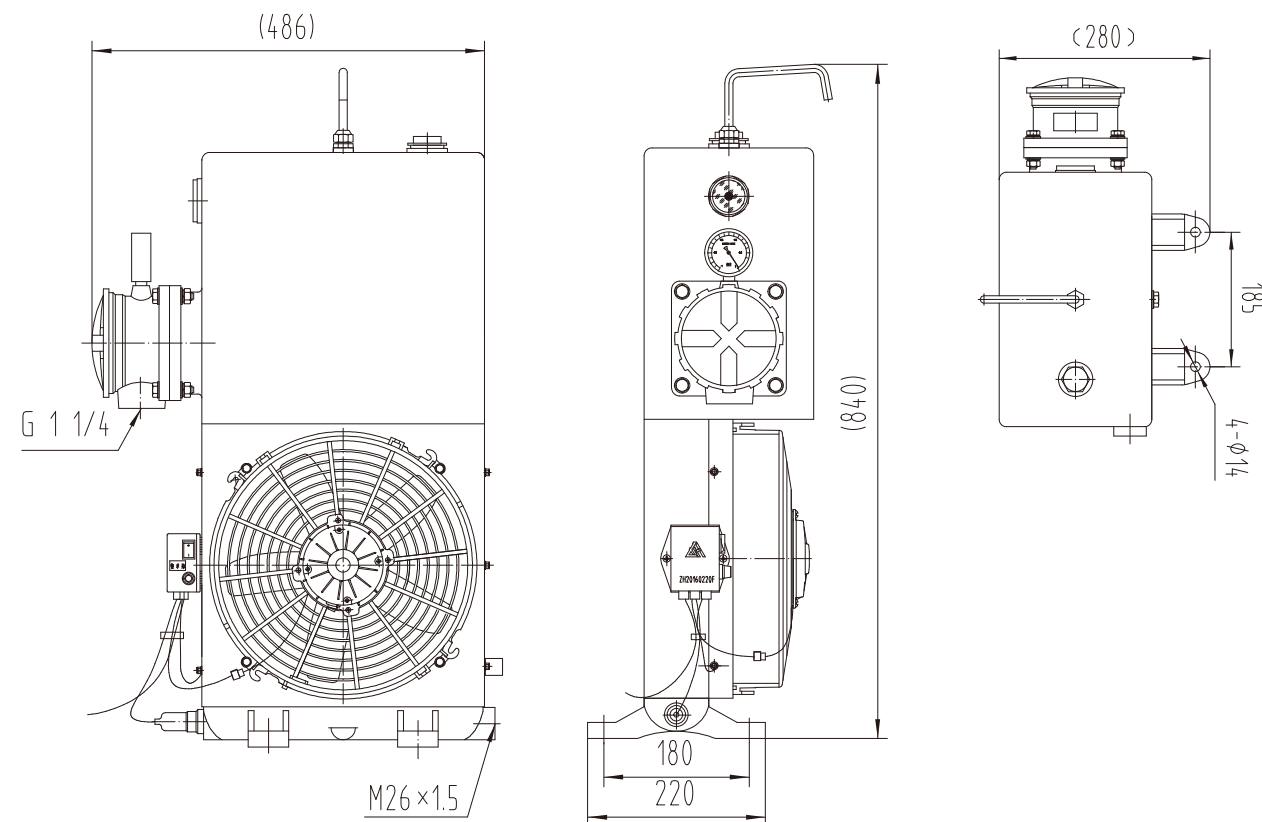
ZHCOOLER

Concrete Mixer Hydraulic Oil Cooler

FLJ-SERIES

ZHCOOLER bar plate oil cooler through 16 years of market tests, after 280 times upgrade improved and now is mature global standard series products, Can be used in any brand of concrete mixer truck and Engineering machinery

- Optional different heat transfer model
- Optional different oil box size (12L-36L)
- Optional different types of motor (DC12/24v)
- Optional different temperature sensor (77°F - 176°F)
- Optional different filtration precision filter
- Optional long service life of the motor (up to 20000 hours)



Model	OilIn (mm)	OilOut (mm)	Power Fan (w)	Voltage (V)	Work Temp (°C)	Oil Box	Filtration Accuracy (μm)	Waterproof	Install Dimension (mm)
FLJ3	M26×1.5	G1 1/4	120	12/24	50-55	12	10	IP68	185×180
FLJ6	M26×1.5	G1 1/4	240	12/24	50-55	15	10	IP68	185×180
FLJ8	M26×1.5	G1 1/4	240	12/24	50-55	18	10	IP68	185×180
FLJ10	M26×1.5	G1 1/4	240	12/24	50-55	21	10	IP68	185×180
FLJ12	M26×1.5	G1 1/4	240	12/24	50-55	26	10	IP68	185×180 305×200
FLJ13	M26×1.5	G1 1/4	240	12/24	50-55	32	10	IP68	185×180 305×240
FLJ15	M26×1.5	G1 1/4	240	12/24	50-55	36	10	IP68	185×180 305×240

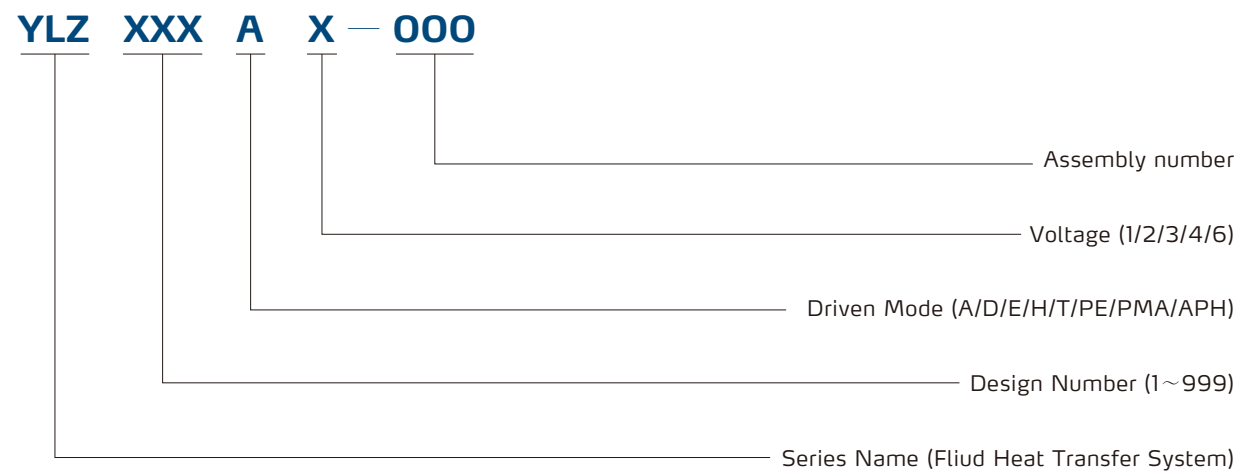


Product Series 04

ZHCOOLER

Aluminum Bar Plate Fin Heat Exchanger With Fan

Model Annotation Explanation:



Driven Description:

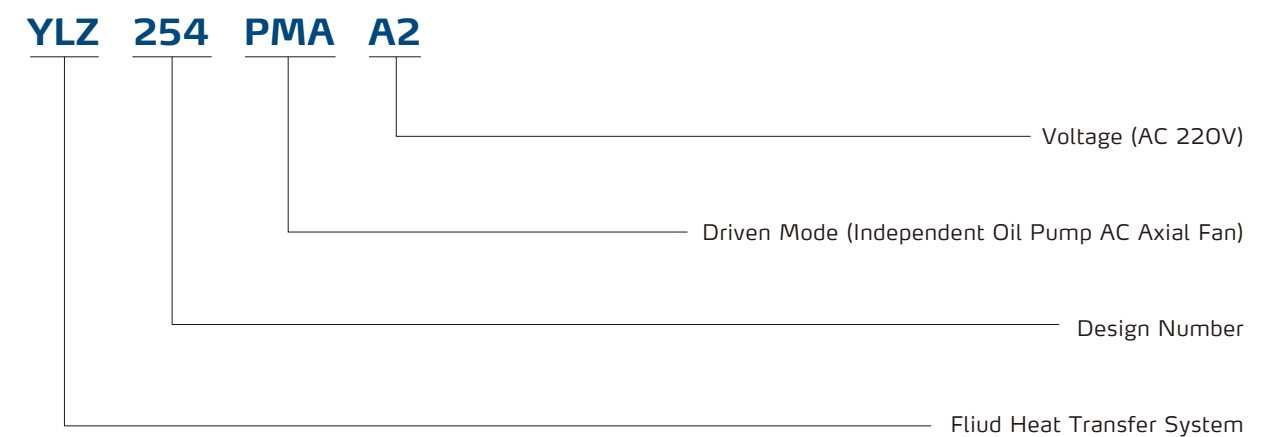
- A: AC Axial Fan
- D: DC Fan
- T: AC Special Fan
- E: AC Standard Fan
- H: Hydraulic Motor Fan
- PE: Oil Pump AC Fan
- PMA: Independent Oil Pump AC Axial Fan
- APH: Pneumatic Fan

Voltage Description:

- A1: AC110V A2: AC220V A3: AC380V
- A4: AC440V A6: AC660V
- D1: DC12V D2: DC24V
- E1: AC110V E2: AC220V E3: AC380V
- E4: AC440V E6: AC660V



Model Example:



AC Axial Driven Fan Bar Plate Fin Heat Exchanger Series

Hydraulic system return line, independent cooling circuit, lubrication system cooling.
Machine tools, professional machinery, engineering machinery, lubrication systems.

- Heat Transfer Capacity from 4-32HP
- Optional 50/60 HZ (110/220/380/440V Fan)
- Optional IP44 - IP54 waterproof motor fan
- Standard series temperature sensor switch
- Blasting pressure reach 8 Mpa
- High strength pressure structure, corrosion resistant material

Model	A	A1	A2	A3	A4	A5	A6	A7	B	B1	B2	B3	B4	B5	B6	B7	C
YLZ123A2	320	300	273	303	45	125	155	180	5	162	241	83	280	255	34	210	G1
YLZ124A2	320	300	273	303	63	125	155	180	5	162	241	83	280	255	34	228	G1
YLZ125A2	380	360	325	355	63	125	155	240	5	193	304	82	340	315	35	240	G1
YLZ126A2	445	425	390	420	63	125	155	310	5	226	367	84	405	380	36	245	G1
YLZ127A2	540	520	485	515	63	125	155	400	5	273	468	79	511	486	30	265	G11/4



Model	Voltage(V)	Hz	FanPower(W)	(A)	Fan(rpm)	Fanφ	dB(A)	Air Flow(m³/h)	Waterproof
YLZ123A2	220	50	68	0.3	2000	200	60	880	IP44
YLZ124A2			68	0.3	2000	200	60	880	IP44
YLZ125A2			100	0.45	2480	250	60	1330	IP44
YLZ126A2			125	0.55	2400	300	60	1800	IP44
YLZ127A2			230	1.07	1350	400	62	3800	IP54
YLZ128A2			430	1.9	1350	450	65	6000	IP54

- Different voltage when there are different power consumption, the table only AC220V / 50 as an example.
- Axial fan standard for the suction type, F-class insulation, in line with CE, UL, CUL standards.
- The noise value is the value at a distance of 1 m.



Product Series 04-2

ZHCOOLER

DC Driven Fan Bar Plate Fin Heat Exchanger Series

Features:

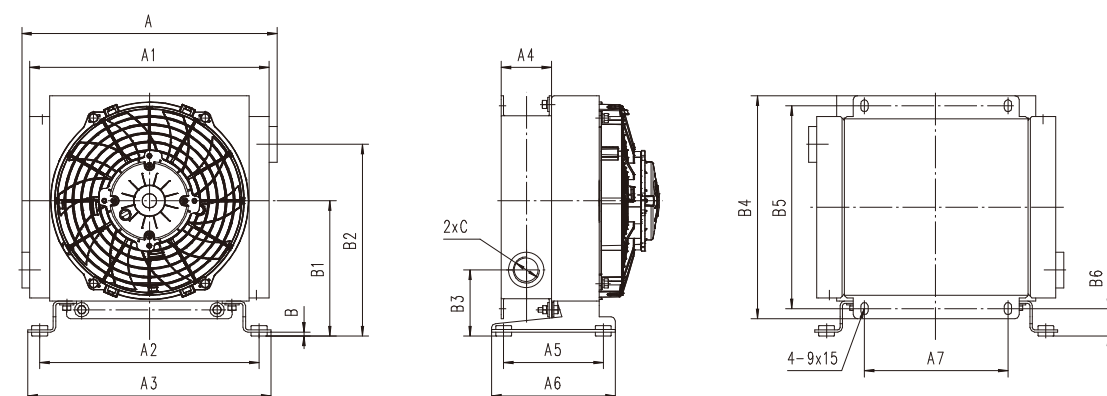
Aluminum bar plate fin structure, coupled with high performance, the overall DC axial fan, small size, air volume is abundant, heat dissipation and efficient.

Application :

Hydraulic system return line, lubrication system cooling. Construction machinery (cranes, pumps, etc.), lubrication systems, gearbox and so on.

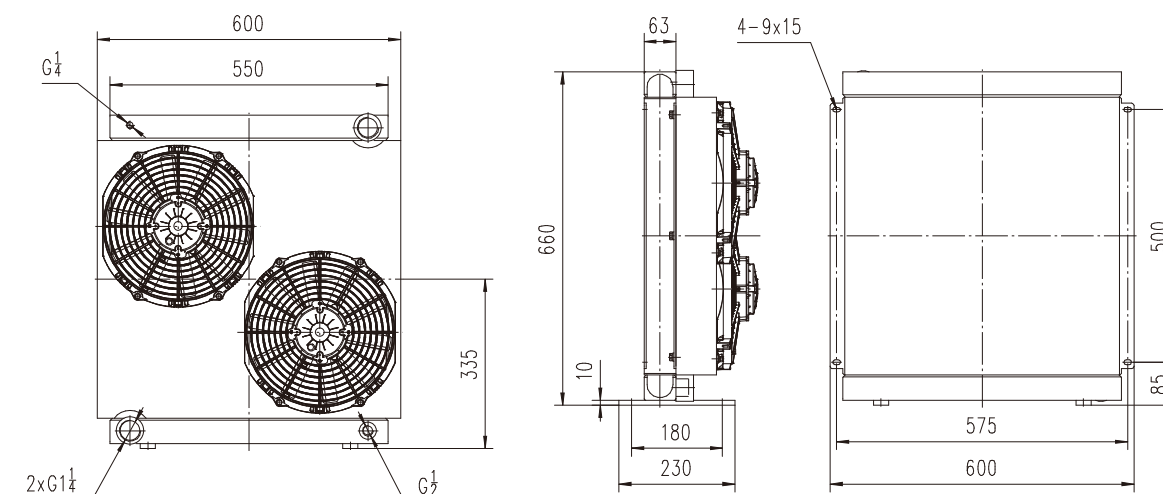
- Heat Transfer Capacity from 4-32HP
- Optional (12/24V Motor)
- Optional IP63 – IP68 waterproof motor
- Standard series temperature sensor switch
- Burst pressure reach 8 Mpa
- High strength pressure structure, corrosion resistant material
- Optional filter
- DC fan standard for the brush motor
- Optional brushless motor

YLZ123D~127D Dimensions:



Model	A	A1	A2	A3	A4	A5	A6	A7	B	B1	B2	B3	B4	B5	B6	B7	C
YLZ123D	320	300	273	303	45	125	155	180	5	170	241	83	280	255	34	180	G1
YLZ124D	320	300	273	303	63	125	155	180	5	170	241	83	280	255	34	198	G1
YLZ125D	380	360	325	355	63	125	155	240	5	193	304	82	340	315	35	205	G1
YLZ126D	445	425	390	420	63	125	155	310	5	226	367	84	405	380	36	206	G1
YLZ127D	540	520	485	515	63	125	155	400	5	273	468	79	511	486	30	230	G11/4

YLZ128D Dimensions:



Technical Parameters:

Model	DC.V	FanPower(W)	(A)	Fan(rpm)	Fanφ	dB(A)	Air Flow(m³/h)	Waterproof
YLZ123D	12	120	10	3200	225	70	1700	IIP68
	24	120	5	3200	225	70	1700	
YLZ124D	12	120	10	3200	225	70	1700	
	24	120	5	3200	225	70	1700	
YLZ125D	12	240	20	2700	280	70	1900	
	24	240	10	2700	280	70	1900	
YLZ126D	12	168	14	2700	305	70	1800	
	24	168	7	2700	305	70	1800	
YLZ127D	12	200	17	2900	385	78	2600	
	24	200	8	2900	385	78	2600	
YLZ128D	12	480	20	2700	280	80	1900	
	24	480	10	2700	280	80	1900	

- DC fan standard for the brush suction style, in line with CE, UL, CUL standards.
- The noise value is a value at a distance of 1 m.



Product Series 04-3

ZHCOOLER

AC Standard Fan Bar Plate Fin Heat Exchanger Series

Features:

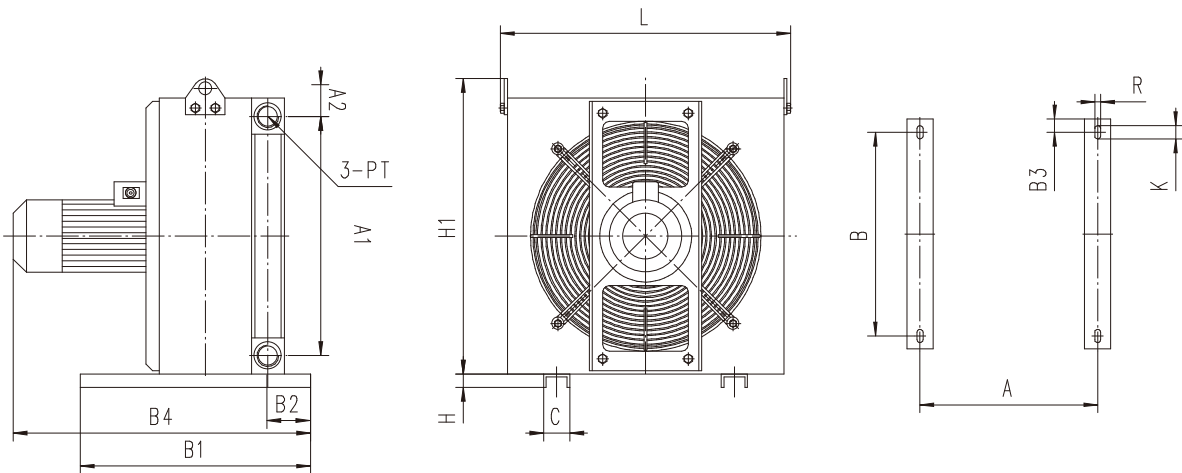
Aluminum bar plate fin structure, with standard motor, high strength fan leaves. Optional temperature switch or filter.

Application :

Hydraulic system return line, independent cooling circuit and gear box cooling.
Machine tools, special machinery, engineering machinery, wind power equipment, hydraulic power stations, lubrication systems, gearbox, and so on.

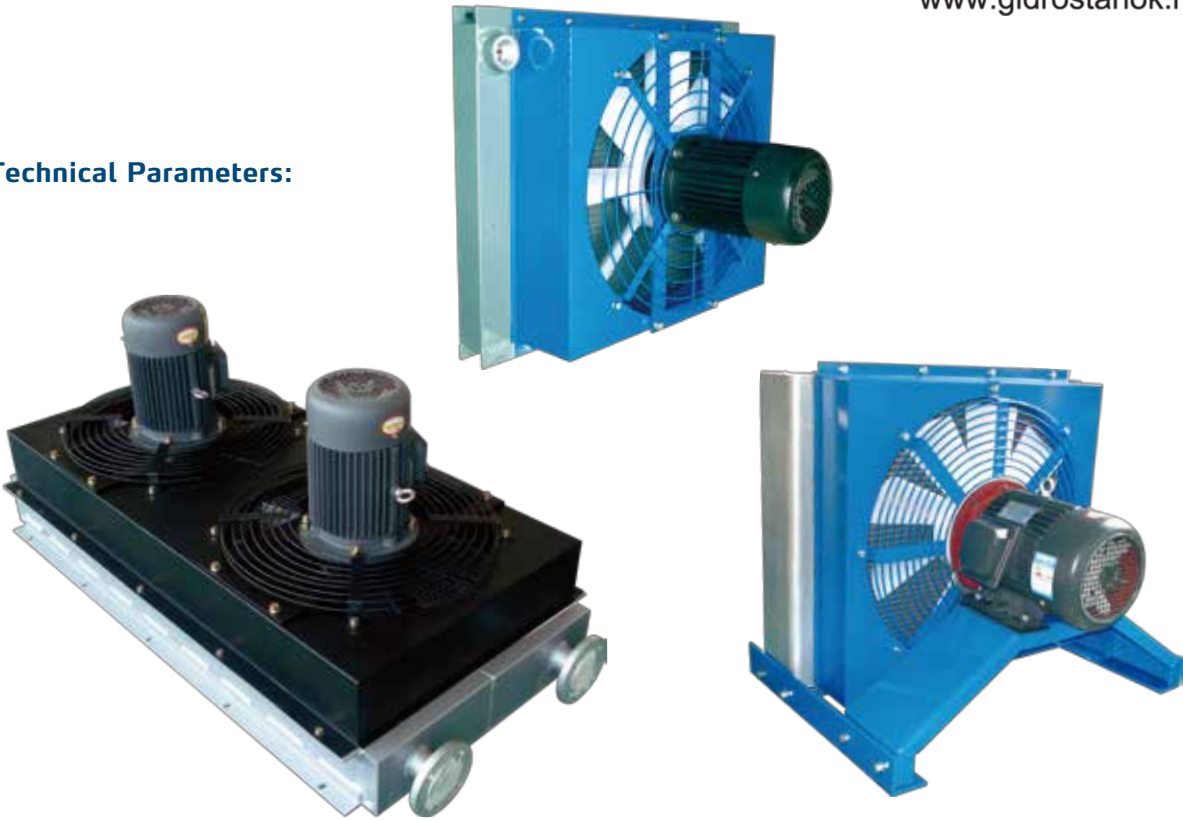
- Heat Transfer Capacity from 4-32HP
- Optional 50/60 HZ (110/220/380/440V Fan)
- Optional IP44 - IP54 waterproof motor fan
- Standard series temperature sensor switch
- Blasting pressure reach 8 Mpa
- High strength pressure structure, corrosion resistant material

Dimensions:



Model	A	A1	A2	B	B1	B2	B3	B4	C	H	H1	L	K	R	PT
YLZ14E	270	364	48	310	350	65	20	452	40	20	465	459	20	9	G1
YLZ16E	320	430	50	340	380	75	20	509	40	20	535	529	20	9	G11/4
YLZ18E	370	475	55	370	410	75	20	519	40	20	590	584	20	9	G11/4
YLZ20E	410	528	66	400	440	75	20	557	50	30	645	639	20	9	G11/4
YLZ22E	470	588	66	430	470	75	20	644	50	30	705	699	20	9	G11/2
YLZ25E	540	658	66	460	500	75	20	664	50	30	775	769	20	9	G11/2
YLZ28E	600	758	66	480	520	75	20	684	50	30	875	869	20	9	G11/2
YLZ32E	680	842	84	550	600	100	25	769	60	40	975	969	30	14	G2
YLZ36E	720	924	88	600	650	100	25	789	60	40	1065	1059	30	14	G2

Technical Parameters:



Model	Max Flow(L/min)	Heat Transfer (KW)	FanPower(W)	Fan(rpm)	dB(A)
YLZ14E	130	14	370	1430	66
YLZ16E	200	19	550	1430	68
YLZ18E	250	25	750	1390	70
YLZ20E	300	32	1100	1390	74
YLZ22E	330	39	2200	1410	79
YLZ25E	350	50	2200	1410	84
YLZ28E	400	67	3000	1410	85
YLZ32E	600	120	4000	1430	86
YLZ36E	700	140	4000	1430	86

- Different voltage when there are different power consumption, the table only AC380V / 50Hz as an example.
- Fan motor standard for the suction type, IP54 or IP55, F-class insulation, in line with CE standards.
- The noise value is a value at a distance of 1 m.

Product Series 04-4

ZHCOOLER

AC Special Fan Bar Plate Fin Heat Exchanger Series

Features:

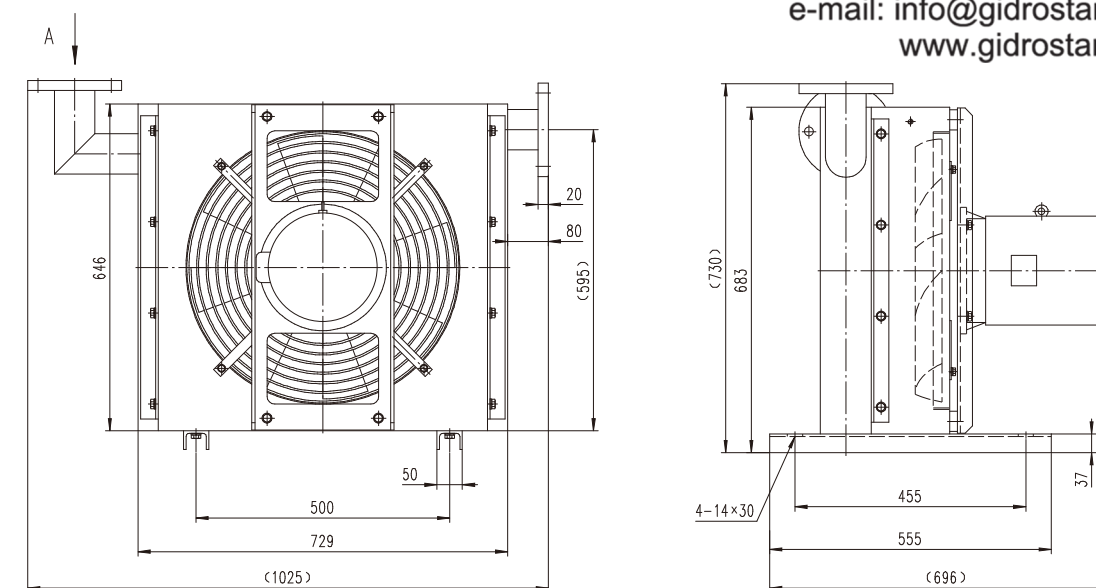
Aluminum bar plate fin structure, the use of high performance Exd I or Exd II explosion-proof motor and high-strength fan leaves, can achieve the best explosion-proof requirements.

Application :

Hydraulic system return line, lubrication system, independent cooling circuit cooling.

Coal mining machinery, chemical machinery, oil and gas field machinery, such as hydraulic power station.

Dimensions:



Technical Parameters:

Model	Max Flow(L/min)	Heat Transfer (KW)	FanPower(KW)	Fan(rpm)	dB(A)
YLZ400E	340	50	2.2	1430	66



- Different voltage when there are different power consumption, the table only AC380V / 50Hz as an example.
- Fan motor standard for the suction type, protection class IP54, IP55, IP56, IP65, F-class insulation, in line with national Ex and international CE standards.
- The noise value is a value at a distance of 1 m.
- Please specify the application area and explosion-proof grade (such as Exd I BT4 or Exd II CT4).

Product Series 04-5

ZHCOOLER

Hydraulic Motor Fan Bar Plate Fin Heat Exchanger Series

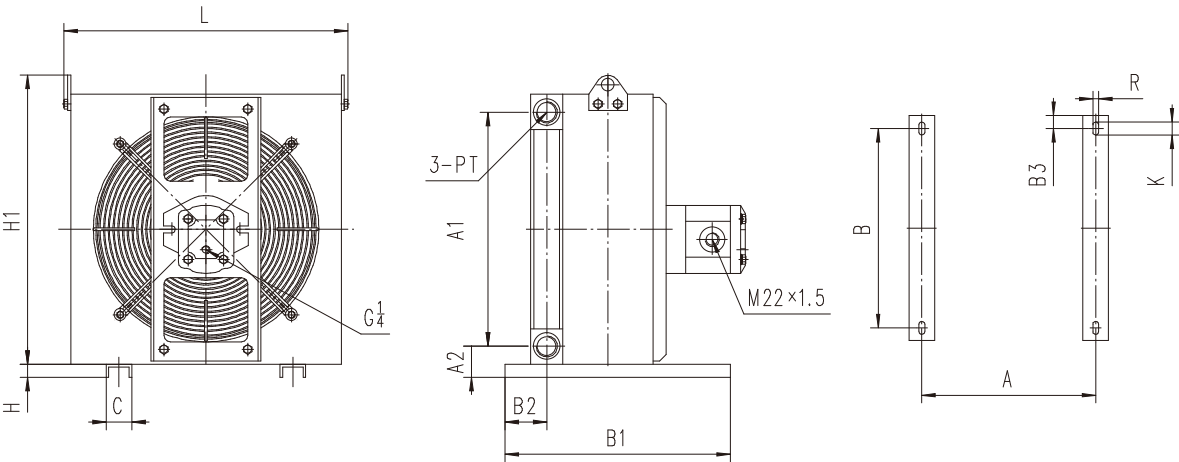
Features:

Aluminum bar plate fin structure, coupled with high-performance hydraulic motor and high-strength fan leaves, can be in a complex working conditions for a long time to work.

Application :

Hydraulic system return line, lubrication system, variable pump drain line cooling.
Construction machinery (cranes, pumps, rotary drilling rig), ship metallurgical and mining machinery and other hydraulic circuit cooling.

Dimensions:



Model	A	A1	A2	B	B1	B2	B3	B4	C	H	H1	L	K	R	PT
YLZ14H	270	364	48	310	350	65	20	452	40	20	465	459	20	9	G1
YLZ16H	320	430	50	340	380	75	20	509	40	20	535	529	20	9	G11/4
YLZ18H	370	475	55	370	410	75	20	519	40	20	590	584	20	9	G11/4
YLZ20H	410	528	66	400	440	75	20	557	50	30	645	639	20	9	G11/4
YLZ22H	470	588	66	430	470	75	20	644	50	30	705	699	20	9	G11/2
YLZ25H	540	658	66	460	500	75	20	664	50	30	775	769	20	9	G11/2
YLZ28H	600	758	66	480	520	75	20	684	50	30	875	869	20	9	G11/2
YLZ32H	680	842	84	550	600	100	25	769	60	40	975	969	30	14	G2
YLZ36H	720	924	88	600	650	100	25	789	60	40	1065	1059	30	14	G2

Technical Parameters:



Model	Max Flow(L/min)	Heat Transfer (KW)	Fan(rpm)	Motor Flow (ml/rev)	dB(A)
YLZ14H	130	15.7	3000	10	79
YLZ16H	200	29.5	3000	10	82
YLZ18H	250	38.6	3000	10	86
YLZ20H	300	34.8	1500	10	76
YLZ22H	330	43.5	1500	16	77
YLZ25H	350	55	1500	16	84
YLZ28H	400	73.8	1500	22	86
YLZ32H	600	132.7	1500	22	88
YLZ36H	700	157.7	1500	22	90

- The displacement of the motor in the table is for reference only and can be adjusted according to the actual working conditions and requirements.
- Motor in and out of the oil is bidirectional, the standard configuration for the suction type.
- The maximum pressure of the outlet port: 120bar The maximum pressure of the drain: 2bar
- The noise value is a value at a distance of 1 m.

Product Series 04-6

ZHCOOLER

Pneumatic Driven Fan Bar Plate Fin Heat Exchanger Series

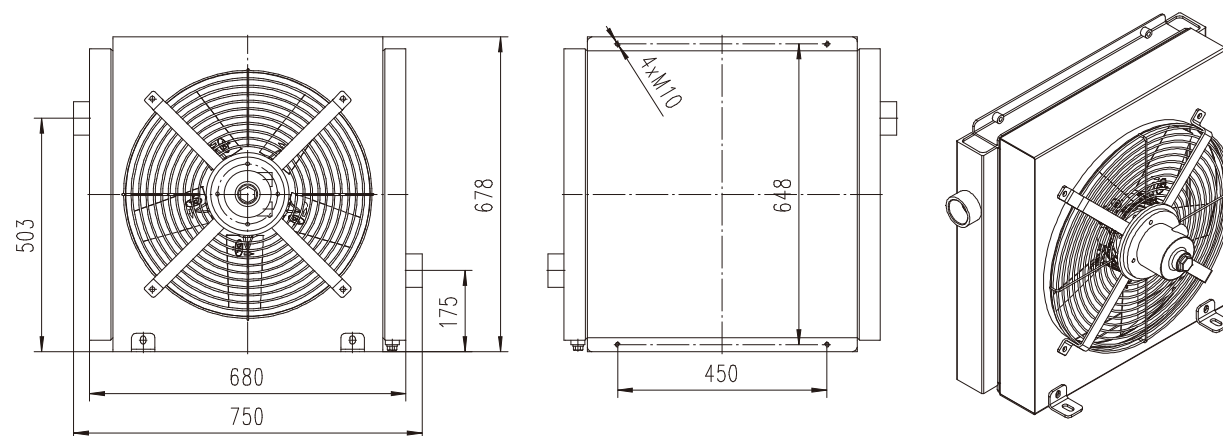
Features:

Aluminum bar plate fin structure, coupled with high-performance air pump motor and high-strength fan leaves, in the complex working conditions for a long time to work.

Application :

air compressor air cooling.

Dimensions:



Technical Parameters:



Model	Heat Transfer (KW)	Air Flow (M³/min)	Motor (HP)	Motor(rpm)	Working Pressure (Mpa)	dB(A)
YLZ156APH	12	130	1.7	3000	0.63	80

- The displacement of the motor in the table is for reference only and can be adjusted according to the actual working conditions and requirements.
- Motor in and out of the oil is bidirectional, the standard configuration for the suction type.
- Maximum operating pressure: 100psi Best use pressure: 70psi Applicable temperature: -10 °C ~ 70 °C
- The noise value is a value at a distance of 1 m.

Product Series 04-7

ZHCOOLER

Oil Pump AC Fan Bar Plate Fin Heat Exchanger Series

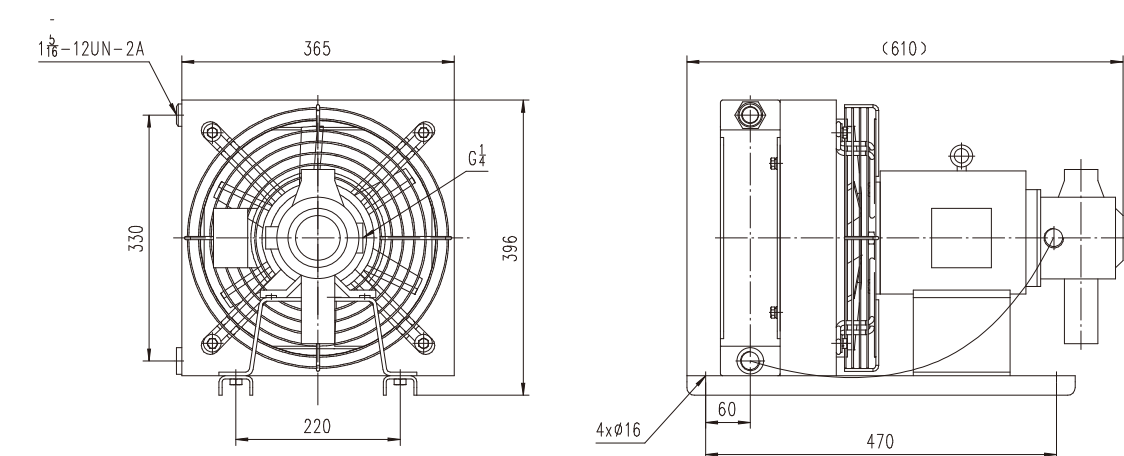
Features:

Aluminum bar plate fin structure, specially designed motor, so that the pump, motor and fan leaves are integrated, suitable for space restrictions are particularly limited occasions. And can form a safe, independent cycle cooling circuit.

Application areas:

suitable for hydraulic system independent cooling circuit, lubrication system and gear box cooling.hydraulic circuit cooling.

Dimensions:



Technical Parameters:



Model	Oil Pump Flow (cc/rev)	Pump(rpm)	Heat Transfer (Kw)	Fan Power (Kw)	Fan (rpm)	Oil Flow (L/min)	dB(A)
YLZ130PE	16.6	800~1800	6	0.75	1440	24	70

- Table is for AC220V, 380V / 50Hz, 60Hz as an example.
- Oil pump inlet and outlet ports for the one-way, the standard configuration for the suction type.
- Maximum pressure of pump: 70bar Drainage maximum pressure: 2bar
- The noise value is the value at a distance of 1 m.

Product Series 04-8

ZHCOOLER

Independent Oil Pump AC Axial Fan Heat Exchanger Cooling System

Product features:

aluminum plate fin structure, oil pump motor and fan motor were controlled, the oil temperature is low when the fan motor to close to achieve energy saving effect.

Application :

suitable for hydraulic system independent cooling circuit, lubrication system and gear box cooling.

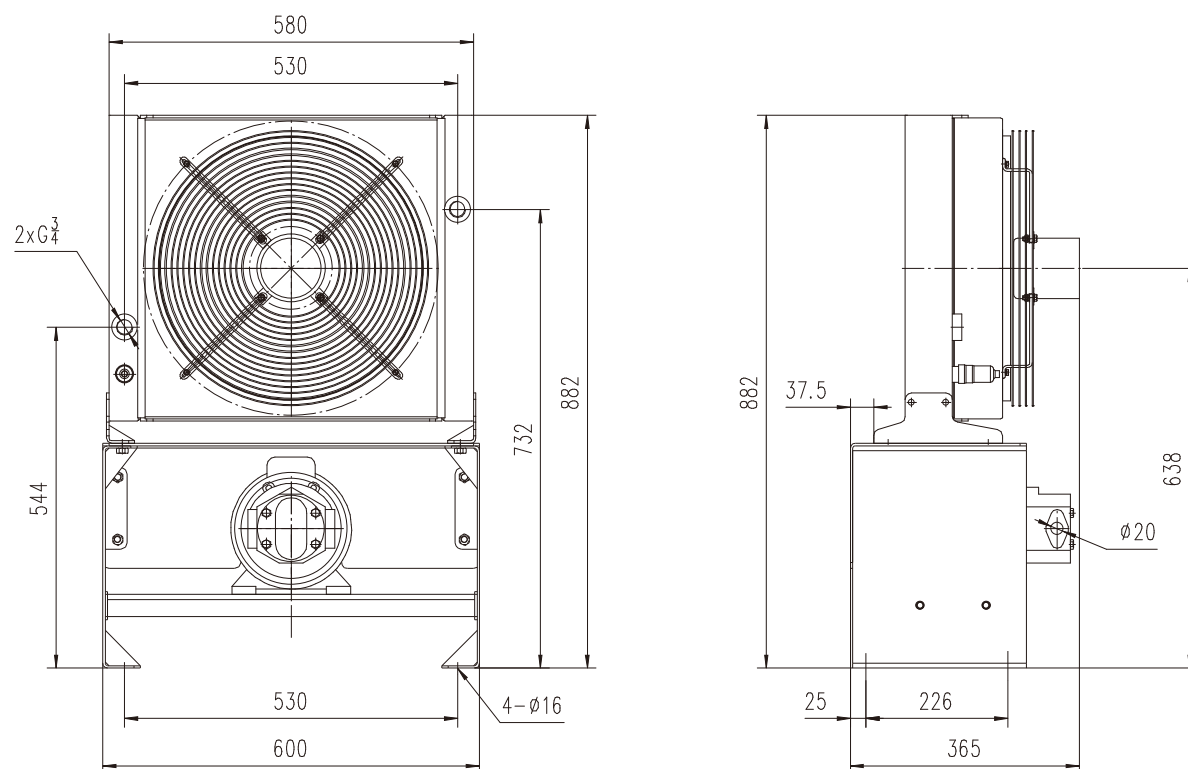


Technical Parameters:



Model	Pump Diameter	Pump Lift(m)	Suction(m)	Heat Transfer(Kw)	Fan Power(Kw)	Fan(rpm)	dB(A)
YLZ254PMA	20	30	4	10	0.37	1440	70

Dimensions:



- Table only AC220V, 380V / 60Hz as an example.
- Oil pump inlet and outlet ports for the one-way, the standard configuration for the suction type.
- Maximum pressure of pump: 70bar
Drainage maximum pressure: 2bar
- The noise value is the value at a distance of 1 m.

Product Series 05

ZHCOOLER

Aluminum & Copper Tube & Flat Fin Radiator

R-HRQ SERIES

AR-HRQ SERIES

ZHCOOLER focus on another type of Aluminum & copper tube & flat fin radiator for 15 years, has rich experience in continuous brazing welding technique.

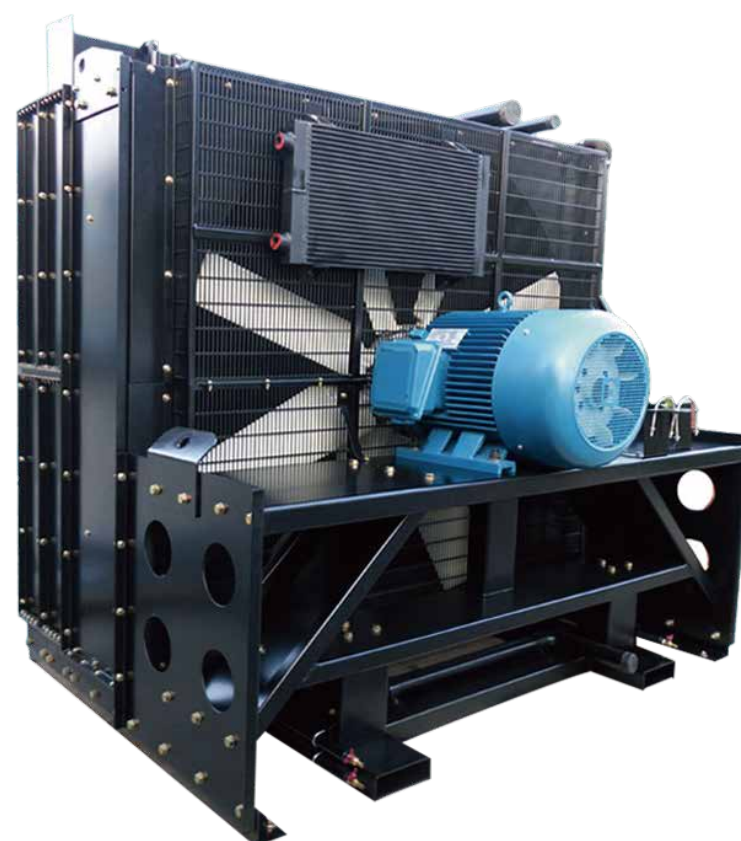
- Products are light weight cost savings
- Welding technology mature, long durability cycles
- Good thermal performance
- Optional a variety of aluminum pipe specification
- Optional variety end cover design
- Casting end cover, mechanical welding end cover, a manual bolt fastening end cover
- Can be customized any size core body
- Optional different surface treatment

CR-HRQ SERIES

ZHCOOLER also have copper radiator, so the heat exchange performance is better.

- Copper material with good thermal performance
- Stronger corrosion resistance
- More suitable environment
- Mature welding technology of copper

Widely used in automobiles, special vehicles, buses, construction machinery, agricultural machinery, and the railway vehicle industry.



Product Series 06

ZHCOOLER

Turbocharge Intercooler

ZLQ SERIES

ZHCOOLER focus on turbocharge intercooler get very many customers love on racing industry.

We can customize any racing ultrahigh pressure intercooler

Big wheels intercooler is we love field

Special vehicle intercooler

Custom bus vehicle intercooler

Fast cars intercooler

Composite cold machine is our design in the world's leading research and development

Composite intercooler split heat exchanger alone, according to the engine exhaust enabled automatically stop



Product Series 07

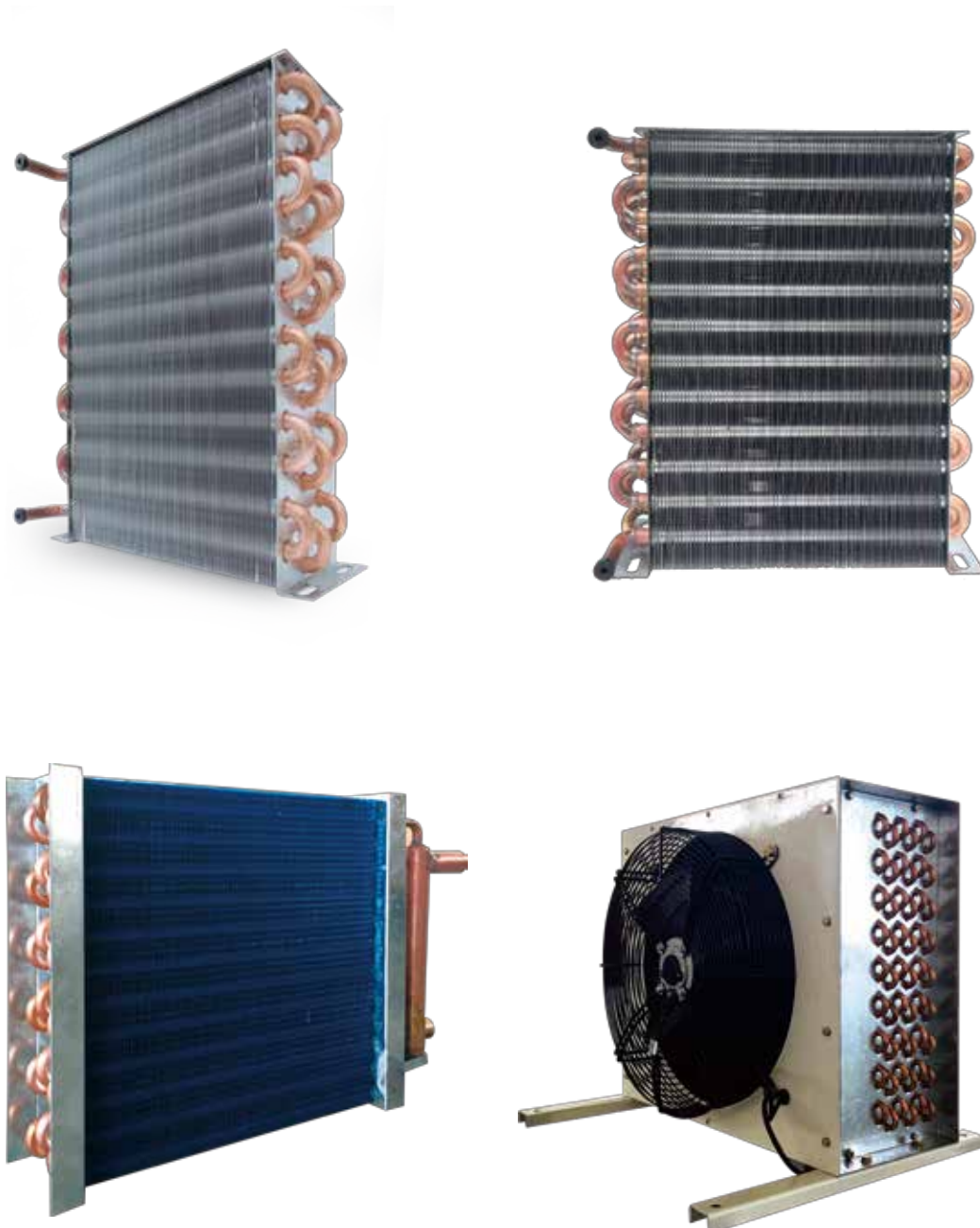
ZHCOOLER

Copper Tube Aluminum Fin Condenser & Evaporator

ZHCOOLER focus on copper tube aluminum fin structure, condenser & evaporator be application in many fields.

Mainly used in automobile air conditioner, refrigeration equipment, heating equipment

- Efficient copper tube heat transfer material
- Any custom the size of the structure
- Optional different thickness of copper pipe specification
- The highest test 9 Mpa pressure of work



SPECIALVEHICLE Series 08-1

AIR CONDITIONER

ZHCOOLER

Vertical Straight Blow Series

Installed in the rear or side of the seat in the driver's cab;
Being of one-piece, direct way out of the wind, strong wind;
Knob or digital display controller.

Model	ZHZ-7
Cooling Capacity	4200W
Heating Capacity	5200W
Compressor Power Consumption	1900W
Total Power Consumption	≤300W
Work Voltage	24V.DC
Refrigerant	R134a
Dimensions	600 × 170 × 540



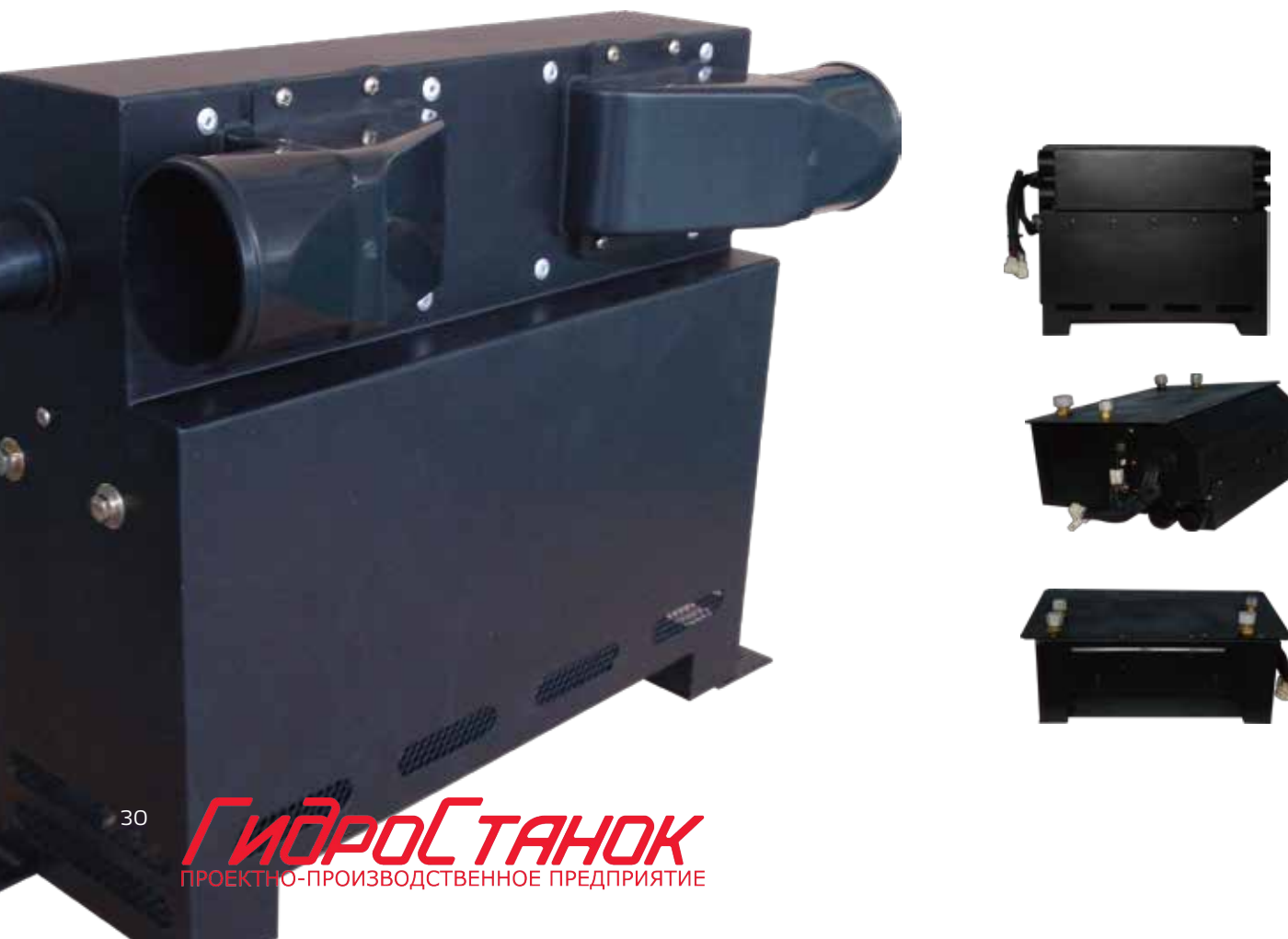
SPECIALVEHICLE Series 08-2

AIR CONDITIONER ZHCOOLER

Vertical Duct Series

Installed in the side of the seat or below the dashboard in the driver's cab;
Being of one-piece, heated with electric valve control, optional renewal wind function.
Duct wind way, the outlet location and cab interior perfect combination of strong wind;
digital or LCD controller.

Model	ZHZ-6
Cooling Capacity	4000W
Heating Capacity	4800W
Compressor Power Consumption	1900W
Total Power Consumption	≤300W
Work Voltage	24V.DC
Refrigerant	R134a
Dimensions	420 × 210 × 400



SPECIALVEHICLE Series 08-3

AIR CONDITIONER ZHCOOLER

Horizontal Straight Blown Series

Installed in the rear of the seat in the driver's cab;
Being of one-piece, direct way out of the wind, strong wind;
Knob or digital display controller

Model	ZHZ-2
Cooling Capacity	4200W
Heating Capacity	5200W
Compressor Power Consumption	1900W
Total Power Consumption	≤300W
Work Voltage	24V.DC
Refrigerant	R134a
Dimensions	545 × 520 × 170



SPECIALVEHICLE Series 08-4

AIR CONDITIONER ZHCOOLER

Horizontal Duct Series

Installed in the rear of the seat in the driver's cab;
Being of one-piece, heated with electric valve control, optional renewal wind function;
Duct wind way, the outlet location and cab interior perfect combination of strong wind;
digital or LCD controller.

Model	ZHZ-18
Cooling Capacity	4200W
Heating Capacity	4800W
Compressor Power Consumption	1900W
Total Power Consumption	≤430W
Work Voltage	24V.DC
Refrigerant	R134a
Dimensions	647 × 285 × 330



SPECIALVEHICLE Series 08-5

AIR CONDITIONER ZHCOOLER

Overhead Air Conditioning



Installed from outside the top driver's cab;
Used by type, direct the wind, air volume was strong;
Knob type or digital display controller;
The products are handsome in appearance, environmental protection and efficient, stable performance, easy installation, easy maintenance features.

Model	ZHZ-13
Cooling Capacity	4000W
Compressor Power Consumption	1900W
Total Power Consumption	≤300W
Work Voltage	24V.DC
Refrigerant	R134a
Dimensions	810 × 760 × 200

Product Series 09

ZHCOOLER

Warm Air Blower Series

Installed in the side of under the seat in the driver's cab. optional direct wind outlet way or wind duct way, optional defrost function.

Model	NFJ-9
Heating Capacity	3500W
Total Power Consumption	≤150W
Work Voltage	24V.DC
Refrigerant	Ethylene glycol antifreeze
Dimensions	325 × 155 × 240



Product Series 10

ZHCOOLER

Liquid Cooling System + Cold Plates

Applications:

power devices,
microelectronic devices,
electrical components,
large server enclosure,
and so on.

